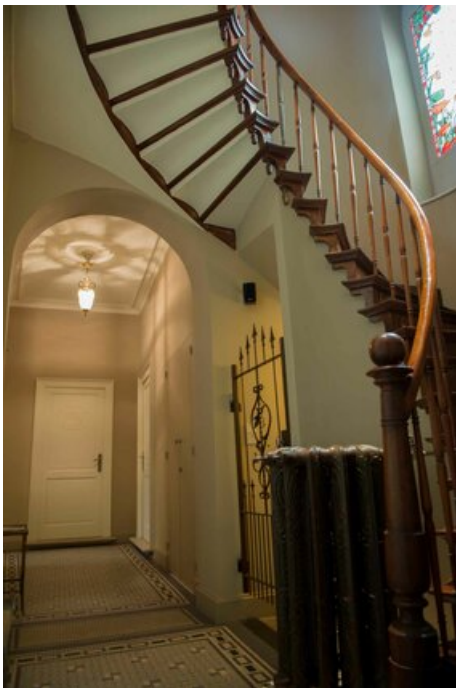


B R U  
G G E

## Patrick Devos

Right in the heart of Bruges, chef Patrick Devos owns an impressively historic patch. The four drawing rooms date back to a variety of style periods and are all absolute pearls. The garden terrace makes the venue utterly complete. In this unique decor, Patrick Devos serves a gastronomic, innovative and light cuisine. A blend of pure flavours, biological vegetables and a maximum harmony between wine and dish. The chef only works with the best quality produce, mainly from his own region. It is therefore only logical that the restaurant has built up quite a reputation over the years.



## Time information

vanaf 07-11-2016

**Monday** 12:00 - 13:30 h / 19:00 - 21:00 h  
**Tuesday** 12:00 - 13:30 h / 19:00 - 21:00 h  
**Wednesday** 12:00 - 13:30 h / 19:00 - 21:00 h  
**Thursday** 12:00 - 13:30 h / 19:00 - 21:00 h  
**Friday** 12:00 - 13:30 h / 19:00 - 21:00 h  
**Saturday** 19:00 - 21:00 h  
**Sunday** closed

## Price information

Richtprijzen

**menu (excl. drank)** € 40.00 - € 80.00  
**dagschotel (excl. drank)** from € 35.00

[Toon route](#)


## Locatie

Zilverstraat 41 , Brugge

[directions >](#)

Facilities

 Meertaligheid kaart

 Multilingual staff

/

Groups

Is bereid om groepen te ontvangen

Labels

 GaultMillau

**Chef:** Patrick Devos

## Contact information

phone +32 50 33 55 66

e-mail [info@patrickdevos.be](mailto:info@patrickdevos.be)

website <http://www.patrickdevos.be>

**f** <https://www.facebook.com/patrick.devos.9421?fref=ts>

## Tourist information

Tel. +32 (0)50 44 46 46

[visitbruges@brugge.be](mailto:visitbruges@brugge.be)

[Secrets of Bruges](#)

## Infokantoren

- Information office Markt (Historium)  
Markt 1 8000 Brugge Today closed
- Information office 't Zand (Concertgebouw)  
't Zand 34 8000 Brugge Today closed
- Information office Stationsplein (Station)  
Stationsplein 8000 Brugge Today closed

## Volg ons op

- [fFacebook](#)
- [tTwitter](#)
- [You Tube](#)
- [inLinked-In](#)
- [Rss](#)

created by [Tobania](#)